



BD SERIES POWER TRANSMITTER



TOP

5 REASONS TO BUY

- Qualified material
- Machine Patch
- Flame retardant enclosure
- Exquisite workmanship
- Sufficient inventory

Intelligent matching

From PLC, analog acquisition card, frequency converter, power meter and electric energy meter, it supports all kinds of acquisition equipment and systems such as electric quantity recorder and DCS, covering almost all industrial control equipment



Product Features

BD series power transmitter

7 features

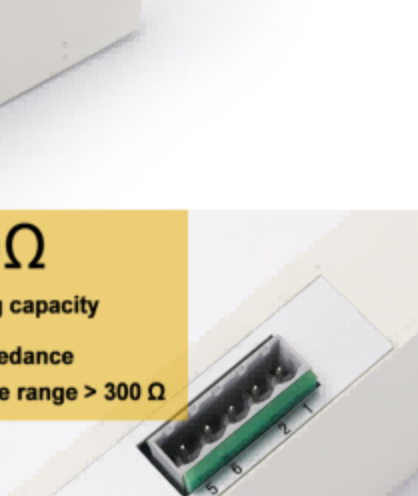
- The measuring transmitter is designed to convert AC electric signal into analog signal or digital signal in accordance with GB/T 13850
- High accuracy class: 0.5
- Full electric parameter measurement, freely combined transmission output type
- The true RMS measurement is suitable for occasions with large harmonics, voltage and current waveform distortion and other harsh environments
- It can be worked with RS485 communication interface and connect on the same 485 bus with the control module of other manufacturers, which is convenient for computer programming. Users can easily build their own measurement and control system
- It can be worked with external display module, and the customer can directly change the input range and transmission type on site
- Optional transformer built-in perforated installation type, convenient for construction wiring and cost saving



2000V

Isolation withstand voltage

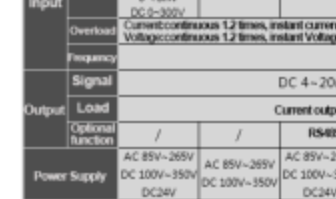
The input and output withstand voltage can reach 2000V



High reliability

Strong anti-interference

Full analog circuit acquisition mode is adopted. Effectively suppress the intercept interference in the line.

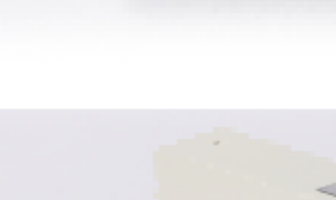
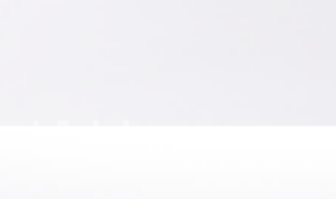
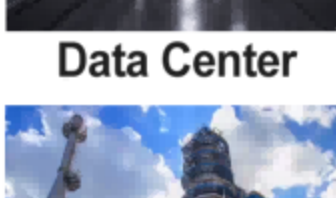


>300Ω

Load bearing capacity

High input impedance

Load resistance range > 300 Ω



Terminal block

Plug in wiring, firm and stable
No dropping, no sliding
More stable performance



Accuracy

Accuracy class: 0.5
High accuracy and low power consumption
More safety



Shell

ABS engineering plastics,
High quality engineering plastic
More refined appearance
Fireproof and flame retardant materials, more safety



Product Parameters



Model	BD-EI BD-EV	BD-TR BD-TRA	BD-AI BD-AV	BD-3S BD-3V3 BD-4V3	BD-3P BD-3Q BD-3P/Q1	BD-4P BD-4Q BD-4P/Q1	BD-3E BD-4E BD-4EA	BD-PE BD-F	
Accuracy	0.5 class, 0.2 class								
Input	Signal	DC 0-20mA 0-20 mA DC 0-10V 0-75mV DC 0-300V	PT100	AC 0-1A, 0-5A AC 0-120V, 0-300V, 0-500V		AC 1A, 5A AC 100V, 220V, 380V			
	Overload	Current: continuous 1.2 times, instant current 10 times per second Voltage: continuous 1.2 times, instant voltage 10 times per second							
Frequency	45Hz-65Hz								
Output	Signal	DC 4-20mA, 0-20mA, 0-5V, 0-10V							
	Load	Current output:500Ω Voltage output:1000Ω							
Power Supply	Optional function	/	/	RS485	/	RS485			
		AC 85V-265V DC 100V-350V DC24V	AC 85V-265V DC 100V-350V	AC 85V-265V DC 100V-350V DC24V	AC 85V-265V DC 100V-350V DC24V/48V	AC 85V-265V/DC 100V-350V			
Temperature drift coefficient	0.5class:200ppm/°C				0.2class:100ppm/°C				
Response time	<400ms								
Insulation resistance	≥100MΩ								
Power frequency withstand voltage	Auxiliary power supply / Input / Output /2kV / 1min,50Hz								
Operating	Temperature	Work : -10°C-55°C Store : -25°C-70°C							
	Humidity	≤80%RH, places without condensation and corrosive gas							
Installation mode	≥2500mm								
Installation mode	TS35mm din rail or screw fixing								

Product Introduction



Data Center



Office building



Industrial field



Port

Product Certificate



Product Presentation

