

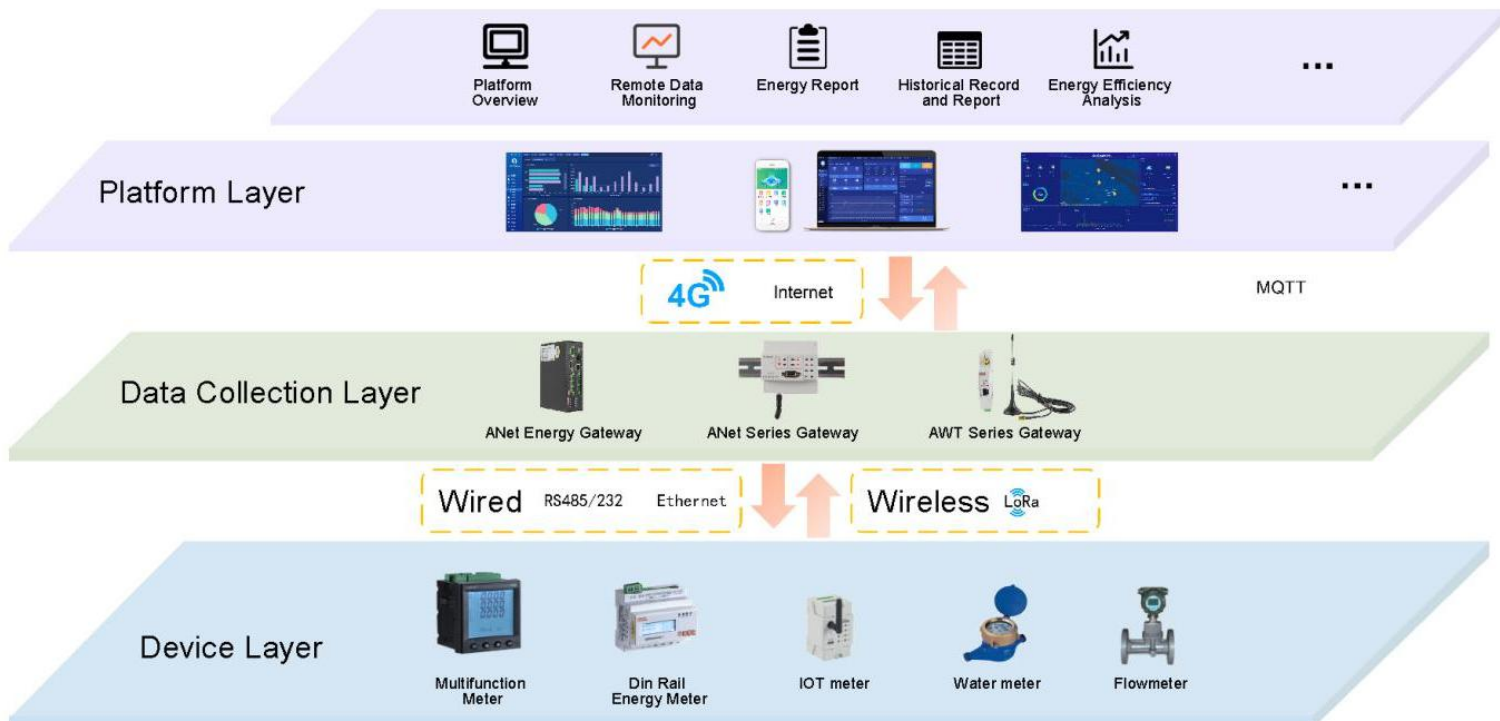
Energy Efficiency Management

System

Application

- Office Building;
- Commercial Building;
- Transportation Building;
- Scientific, Bducational, Cultural and Healthy Architecture;
- Communication Architecture;
- Tourist Building.

Structure



Main Functions

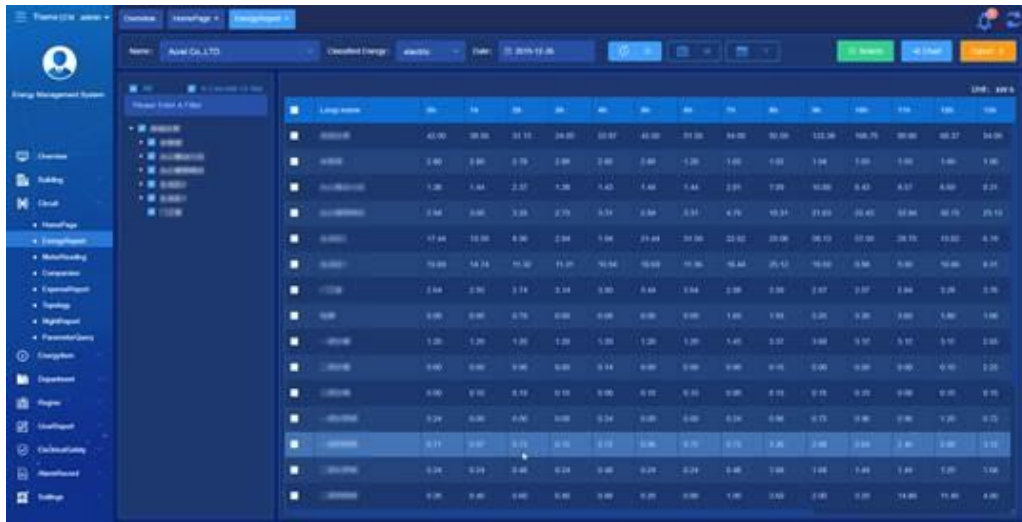
1) Platform Overview



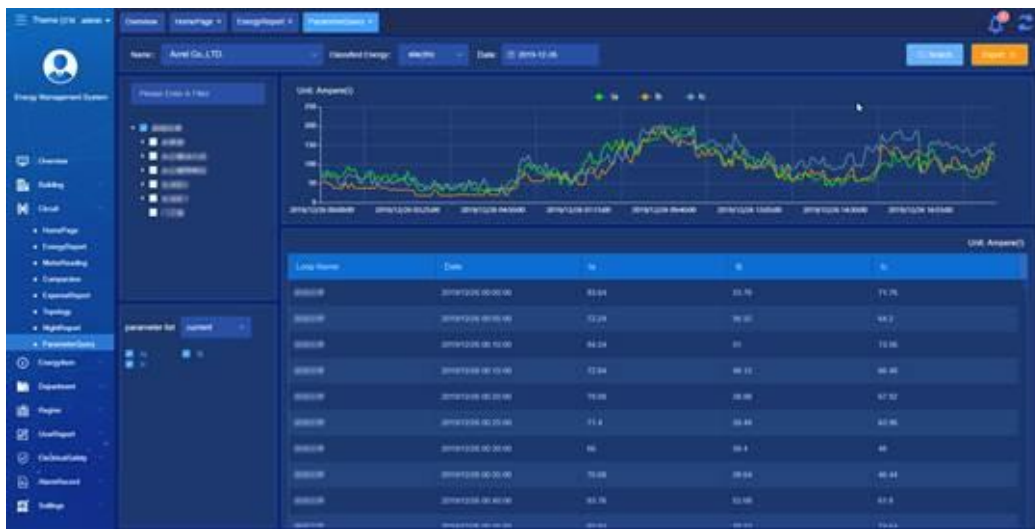
2) Remote Data Monitoring



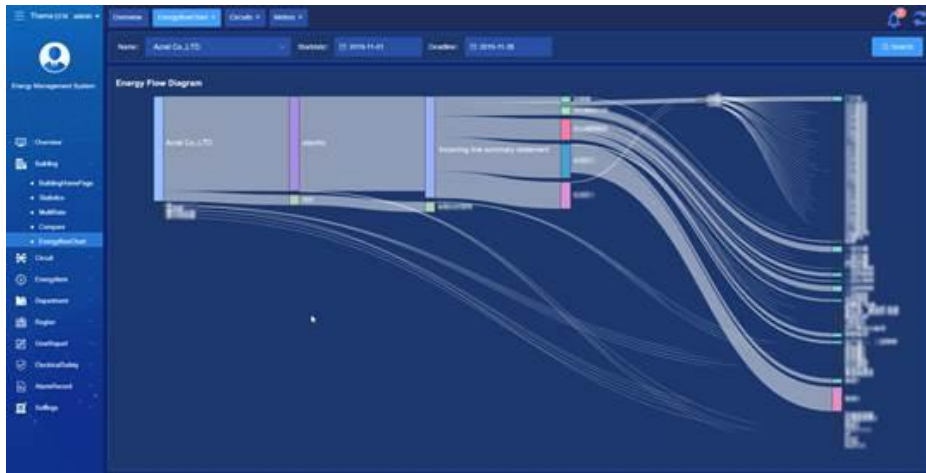
3) Energy Report



4) Historical record and report



5) Energy Efficiency Analysis



6) Web/APP



Product selection

APM810 Multifunction Meter

- True RMS Measurements
- THD with 63rd Harmonics
- K-Factor and Crest Factor
- Unbalance & Phase Angles
- Demands and Multi-Tariff energy
- Max/Min Log with Timestamp



AMC96L-E4/KC Multifunction Meter

- True RMS Measurements
- THD with 2-31st Harmonics
- Max/Min Log with Timestamp
- Internal Optional 4DI&2DO or 2DI &2DO &2AO
- Standard one Energy Pulse Output
- DIN 35 mm



ADW400 Power Cabinet

- Measurement: Maximum 4 circuits 3 phase U、I、P、Q、S、PF、kWh、kvarh
- $3 \times 220/380V, 3 \times 380V, 3 \times 57.7/100V, 3 \times 100V$
- $3 \times 1(6)A, 3 \times 20(100)A, 3 \times 80(400)A, 3 \times 120(600)A$
- Communication: RS485 or LoRa
- DIN 35mm





ADL3000-E Three Phase Multi-function Energy Meter

- AC $3 \times 220/380V$, $3 \times 380V$, $3 \times 57.7/100V$, $3 \times 100V$
- $3 \times 1 (6) A$, $3 \times 10 (80) A$
- U、I、P、Q、S、PF、kWh、kvarh
- RS485(MODBUS-RTU)
- LCD display
- Frozen data
- kWh Class 0.5S, kvarh Class 2

ADL400 Din Rail Energy Meter

- AC220V
- $3 \times 1(6)A, 3 \times 10(80)A$
- RS485(MODBUS-RTU)
- Set parameters
- LCD display
- kWh Class 0.5
- DIN 35 mm



ADL100-ET Single Phase Multi-function Energy Meter

- AC220V
- $10 (60) A$, $20 (100) A$
- RS485(MODBUS-RTU)
- Set parameters
- LCD display
- kWh Class 1
- DIN 35 mm



ADL200 Din Rail Energy Meter

- AC220V
- 3×10(80)A
- RS485(MODBUS-RTU)
- Set parameters
- LCD display
- kWh Class 1



Anet-1E2S-4G Gateway

- Downlink:2* RS485
- Uplink:4G

ADL10-E Single Phase Electric Energy Meter

- AC 220V
- 10 (60) A
- RS485, MODBUS-RTU
- LCD display
- kWh Class 1, Kvarh Class 2
- U、I、P、Q、S、PF、kWh、kvarh



About Acrel



Acrel Co., Ltd.[stock code: 300286.sz] is founded in 2003, a high-tech enterprise integrates R&D, production, sales and service, since its establishment, it committed to provide users with energy efficiency management and power security system solutions. Acrel Electric has a complete production line from cloud platform software to sensors. Until now, more than 10,000 sets of various solutions are running all over the country.

Workshop



Contact

Jiangsu Acrel Electrical Manufacturing Co., LTD.

No.5 Dongmeng Road, Nanzha Street, Jiangyin City, Jiangsu Province, China.

Tel:0086 0510--86179966

Fax:0086 0510--86179975

Email:sales01@email.acrel.cn

Mobile Phone: 0086 18860990013

Whatsapp: 0086 18860990013

Skype: sales01@email.acrel.cn