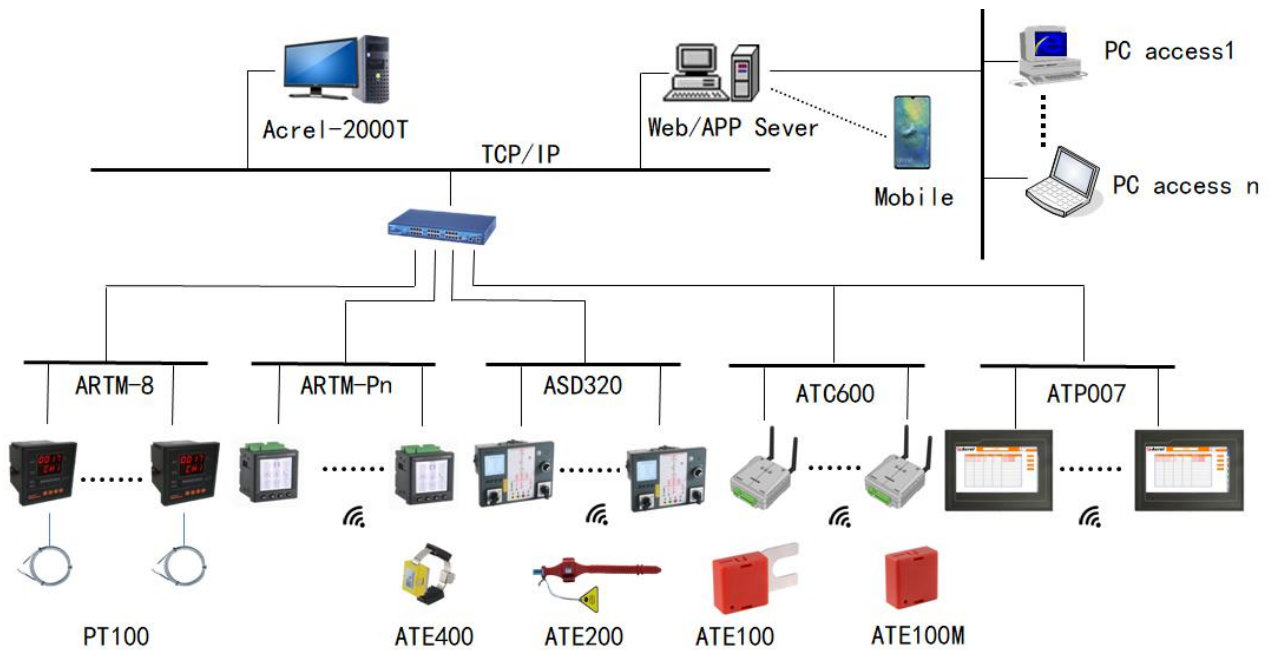


Wireless Temperature Monitoring System

Application

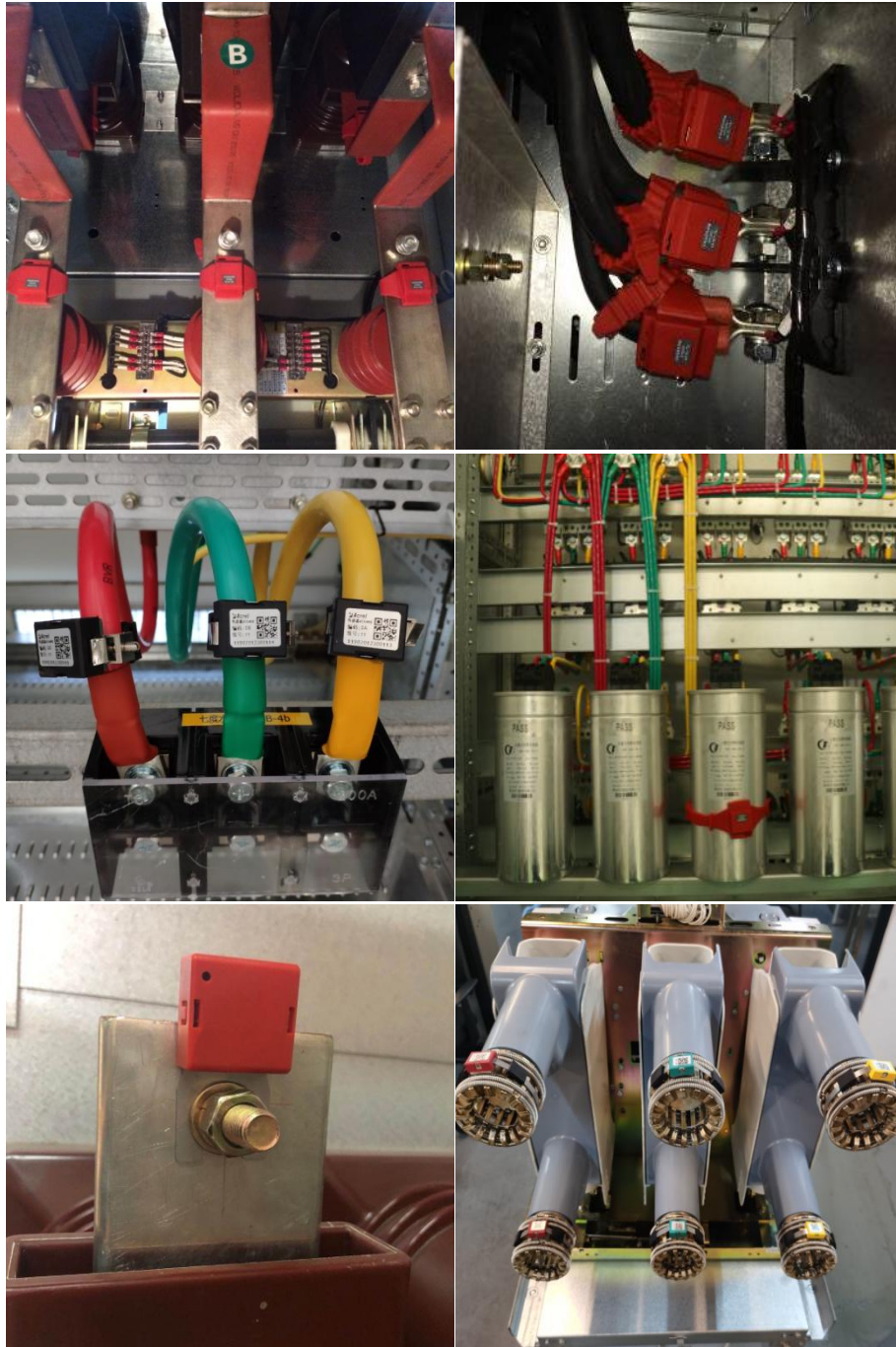
- State Grid ;
- Industrial and Mining Enterprise;
- Petroleum;
- Chemical Industry;
- Date Center
- Metallurgical Industry;
- Municipal Engineering;
- Trafic.

Structure

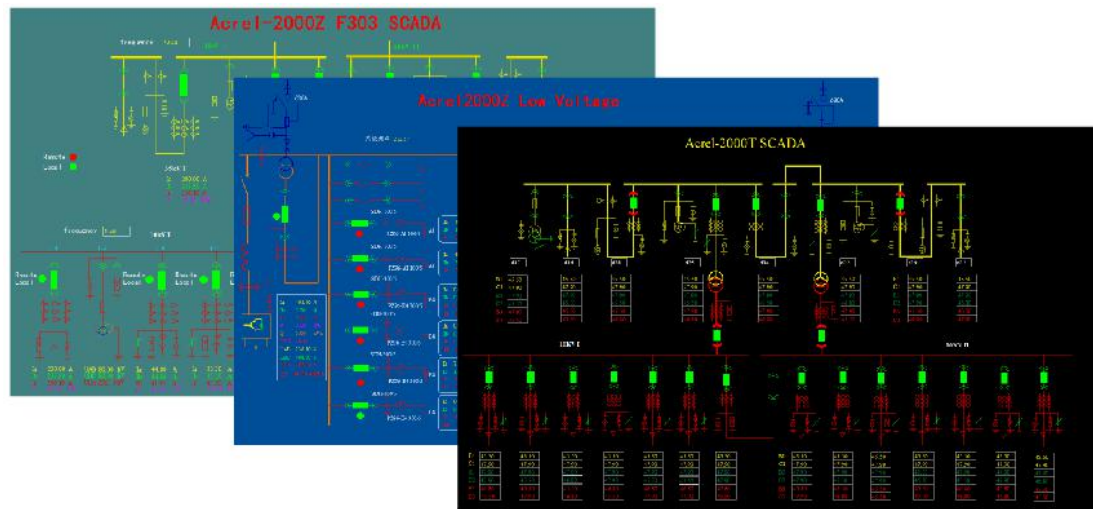


Main Functions

1) Wireless monitor temperature



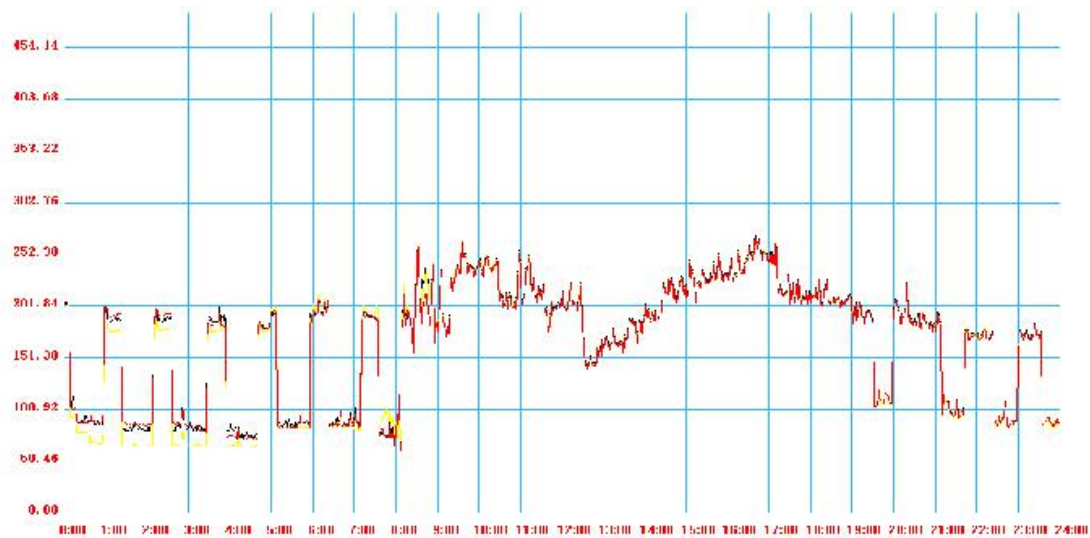
2) Temperature display



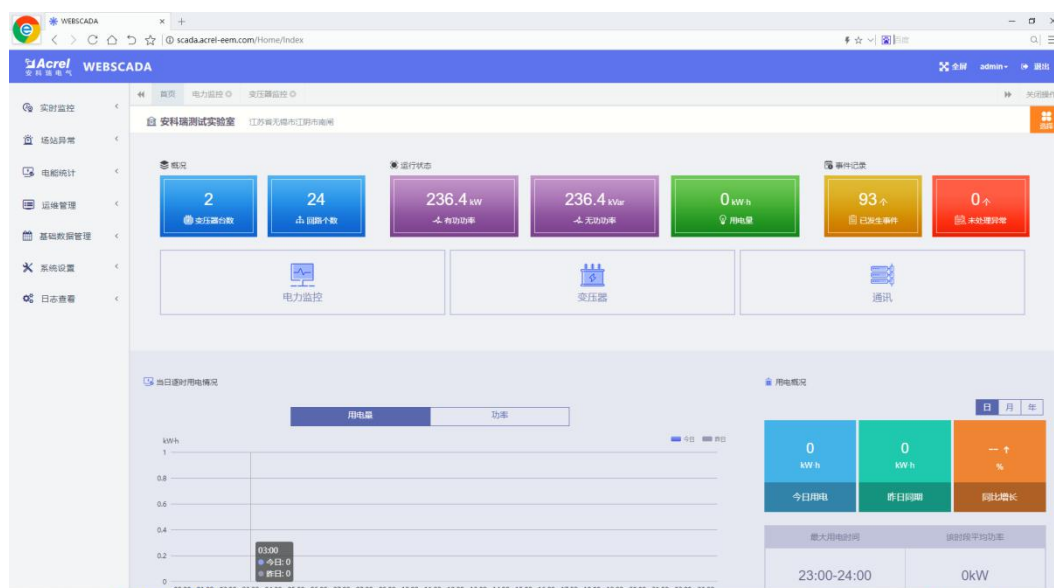
3) Report

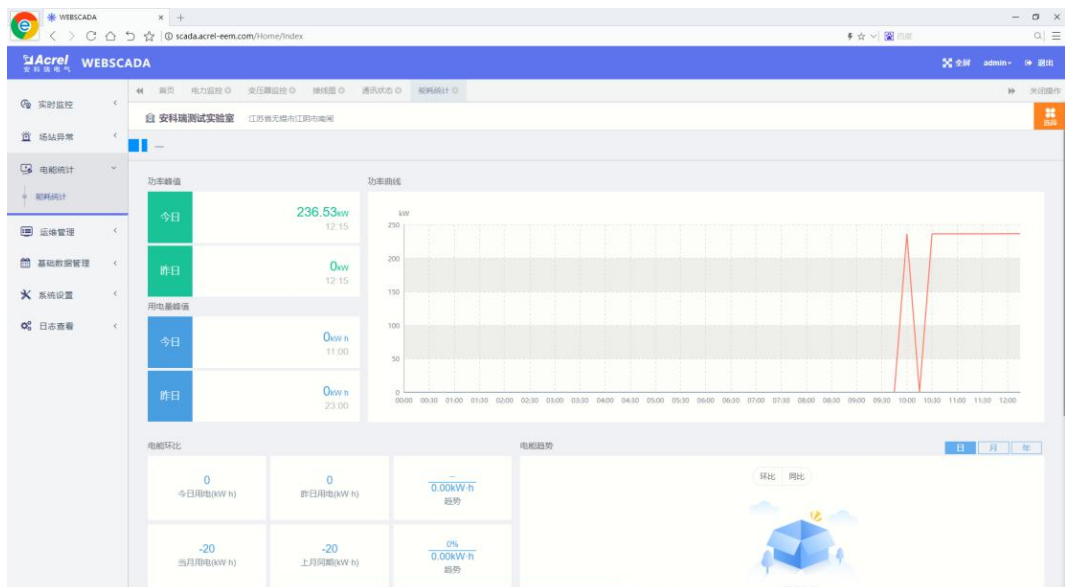
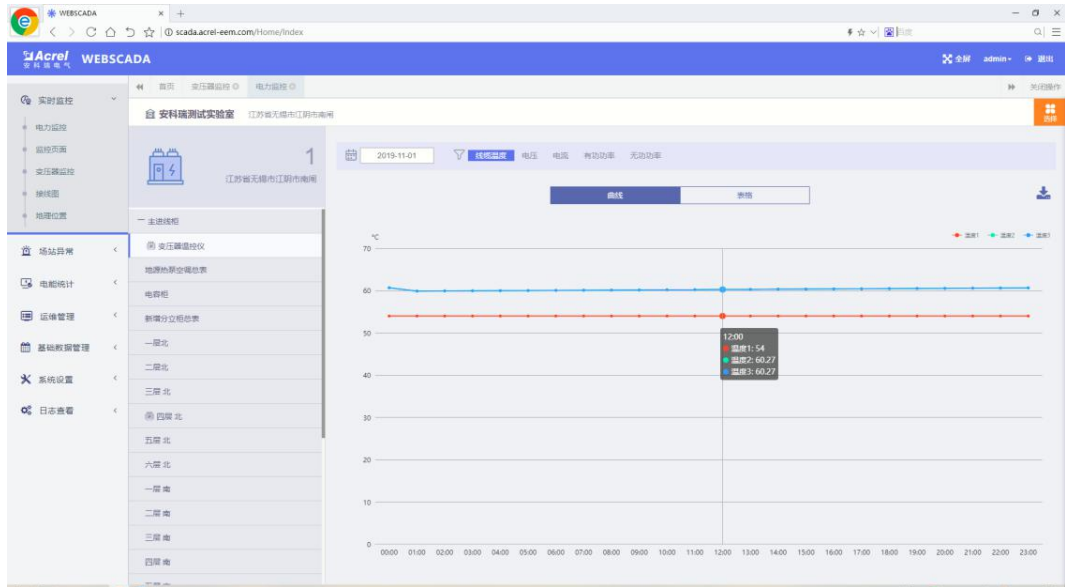
[illegible]

4) Curve



5) Web/APP





Solution selection

01

In Medium and Low Voltage Cabinets
--with display



ARTM-Pn

1



ATE100M\ATE100\ATE200\ATE400\ATE100P\ATE200P

60

within 10 cabinets



02

In Medium and Low Voltage Cabinets
--without display



ATC450-C

1



ATE10M\ATE100\ATE200\ATE400\ATE100P\ATE200P

60

(within 10 cabinets)



ATC600-C

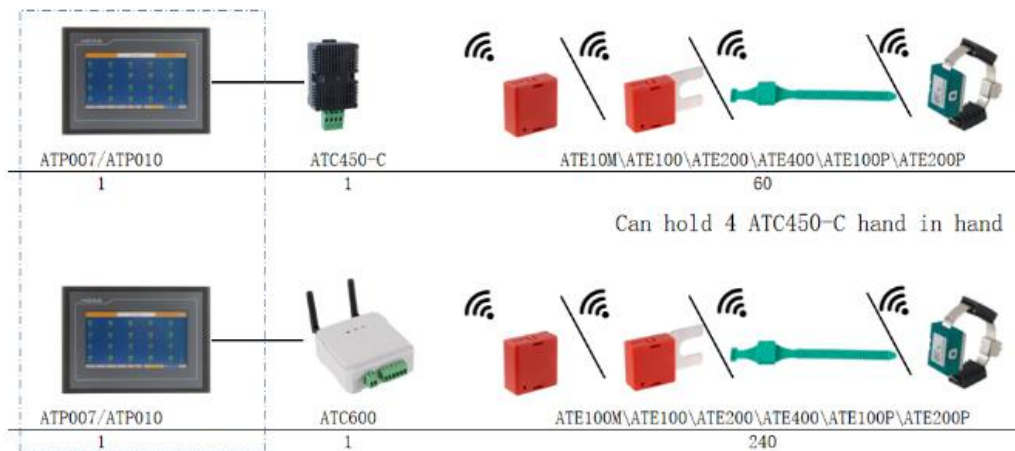
1



ATE100M\ATE100\ATE200\ATE400\ATE100P\ATE200P

240

(within 10 cabinets)



Product selection

ATE400 Wireless Temperature Sensor

- Small size
- Wireless transmit;
- Wireless transmission distance, 150 meters;
- Fast sampling frequency, 15s;
- CT-powered, more than 5A starting current;
- Wide temperature measuring range, -40°C ~ 125°C .



ATE200 Wireless Temperature Sensor

- Wireless transmit;
- Wireless transmission distance, 150 meters;
- Fast sampling frequency, 25s;
- Battery-powered, more than 5 years;
- Wide temperature measuring range, -40°C ~ 125°C

ATE100 Wireless Temperature Sensor

- Wireless transmit, 2.4GHz;
- Wireless transmission distance, 10 meters;
- Fast sampling frequency, 25s;
- Battery -powered, more than 5 years;
- Widely temperature measuring range, -40°C~+125°C
- DIN 35 mm



ATE100M Wireless Temperature Sensor

- Wireless transmit
- Wireless transmission distance, 150 meters;
- Fast sampling frequency, 25s;
- Battery -powered, more than 5 years;
- Widely temperature measuring range, -40°C ~+125°C.

ATC450-C Wireless Transceiver

- Wireless temperature measurement;
- Measuring 60 points;
- 1 RS485 serial communication, Modbus-RTU;
- Power supply adapt with DC24V
- DIN 35mm





ATC600-C Wireless Transceiver

- Wireless temperature measurement;
- Measuring 240 points;
- 1 RS485 serial communication, Modbus-RTU;
- 2 alarm relays
- Power supply adapt with AC/DC220V , AC/DC110V.

ARTM-Pn Wireless Temperature Monitor

- Wireless temperature measurement , maximum measuring 60 points;
- 4 digital inputs;
- 2 alarm relays;
- LCD display;
- Auxiliary power supply adapts with AC220V, DC220V, DC110V, AC110V;



Acrel-2000T/A Collection Device

- Wireless temperature measurement, 240 points;
- Power supply adapt with AC220V, DC220V, DC110V, AC110V;
- Temperature Curve;
- High temperature alarm, buzzer;
- 1 RS485 serial communication , Modbus-RTU;
- 1 Ethernet communication.

About Acrel



Acrel Co., Ltd.[stock code: 300286.sz] is founded in 2003, a high-tech enterprise integrates R&D, production, sales and service, since its establishment, it committed to provide users with energy efficiency management and power security system solutions. Acrel Electric has a complete production line from cloud platform software to sensors. Until now, more than 10,000 sets of various solutions are running all over the country.

Workshop



Contact

Jiangsu Acrel Electrical Manufacturing Co., LTD.

No.5 Dongmeng Road, Nanzha Street, Jiangyin City, Jiangsu Province, China.

Tel: 0086 0510--86179966

Fax: 0086 0510--86179975

Email: sales01@email.acrel.cn

Mobile Phone: 0086 18860990013

Whatsapp: 0086 18860990013

Skype: sales01@email.acrel.cn